





Hard wire kit installation instructions

To The Electrician

The towel rail must be connected by a registered electrician.

Fittings checklist

fittings	description	quantity
	Diamond Drill Bit	1
	Wall Anchor Sleeve	1
	Wall Anchor	1
	Diamond Drill Template	1

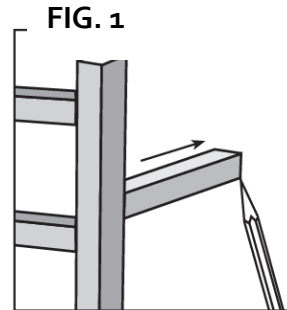
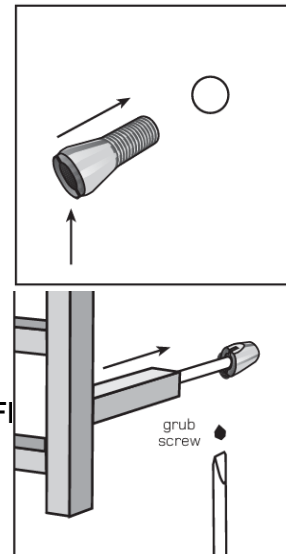


FIG. 2



Installation (also refer to installation instructions supplied with the towel rail)

1. Once you have marked out the position of the rail on the wall (as per recommended mounting procedures), drill a 16 mm hole using the drill bit supplied or an appropriate drill bit in the wall on the mark where the cord will enter the wall. See Fig .1
2. Install a draw wire from the flush box (switch or controller) to the 16 mm exit hole in the wall.
3. Insert the wall plug provided into wall. Screw the cable entry fitting into the hole in the wall using an adjustable spanner or screw driver. See Fig . 2
4. The draw wire will then need to pass through the cable entry fitting.
5. Place the towel rail on the wall and tighten all four Grub screws using the Allen key provided.
6. IP Rating 34.
7. 15 Year replacement Warranty applies to all rails from date of purchase.

