

FORMe
BATHROOM COLLECTION



MIX & MATCH Designer Vanity Collection



FORME MIX & MATCH VANITY COLLECTION

Forme Bathroom Collection have taken customisation to the next level with our new Mix & Match Vanity Collection offering a broad range to choose from with a total of three collections giving you the freedom to mix and match size, format style, mount, finish, colour, basin and benchtop style.

Mont Albert is the most comprehensive of the three ranges offering both wallhung and floor mount options. In addition you can choose lefthand or righthand doors/drawers which allows you to work around existing plumbing or fixtures making your bathroom renovation much easier and less restrictive.

Blade is a an all drawer collection offering wall & floor mount options for those who love drawer storage solutions. Available with a designer Blade handle for ease of opening and all drawers include superior soft close drawer hardware.

Madrid is a minimalistic design, offering a single soft close drawer. This is a wallhung collection only and is often purchased in wet areas such as powder rooms and guest bathrooms due to its simplistic yet contemporary design.

Matching Shaving cabinets - Finish off the look while adding additional storage with one of our matching shaving cabinets - available in the same widths and finishes as all the vanities across the three ranges.

The finish on all of the vanities and matching shaving cabinets runs continuously from the exterior on the cabinet through to the interior giving a much more luxurious feel, resembling a solid timber finish.



MONT ALBERT DESIGNER VANITY COLLECTION

The Mont Albert Vanity Collection by Forme offers a range of vanities to suit the most discerning of tastes, successfully maintaining the balance between style and functionality. The Mont Albert Collection offers a sense of understated contemporary style. Mix and match to create the perfect vanity for your bathroom. The Mont Albert collection is available in 5 sizes*, offering both a wallhung or freestanding option to suit any plumbing configuration.

FEATURES / OPTIONS

- Freestanding or wallhung options
- Designed & manufactured by Forme
- 4 x cabinet colours – White Gloss PU, Light Ash, Walnut and Dark Chocolate
- 4 x engineered stone benchtops
- 5 x porcelain basins to select from
- 2 x moulded basins to select from
- Soft close doors & full extension drawers
- Finger pull handles
- LHS & RHS drawer options available
- Matching shaving cabinets available in all sizes

RIGHT: Mont Albert 1200mm freestanding vanity, in Light Ash, Concrete Stone top, Atom basin, RHS drawers with a 10:00 taphole



BLADE DESIGNER VANITY COLLECTION

The Blade collection of vanities offers the customer a designer looking cabinet using all soft close drawers. The Blade vanity collection is available in both wallhung and freestanding options with chrome legs, both boasting an ergonomically designed slim blade handle for ease of opening. Mix & Match to create the perfect vanity for your bathroom.

FEATURES / OPTIONS

- Freestanding or wallhung options
- Designed & manufactured by Forme
- 4 x cabinet colours – White Gloss PU, Light Ash, Walnut and Dark Chocolate
- 6 x porcelain basins to select from
- 2 x moulded basins to select from
- Soft close drawers
- Blade polished chrome handles
- Matching shaving cabinet available in all sizes

RIGHT: Blade 1200mm freestanding vanity, in Walnut, Porcelain basin top, 1TH



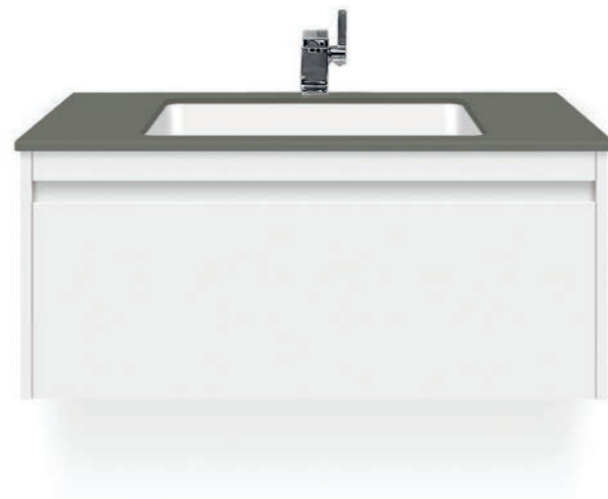
MADRID DESIGNER VANITY COLLECTION

The Madrid collection of vanities offers the customer a stunning single drawer wallhung designer vanity for the more minimalistic of bathroom designs. Available in 4 x sizes and a variety of colours, Mix & Match to create the perfect vanity for your bathroom.

FEATURES / OPTIONS

- Wallhung option only
- Designed & manufactured by Forme
- 4 x cabinet colours – White Gloss PU, Light Ash, Walnut and Dark Chocolate
- 6 x porcelain basins to select from
- 2 x moulded basins to select from
- Soft close drawer
- Finger pull handles
- Matching shaving cabinet available in all sizes

RIGHT: Madrid 900mm wallhung vanity, in White Gloss, Taupe Stone top and under counter basin, 1TH



MATCHING SHAVING CABINETS – OPTIONAL EXTRAS

If your bathroom is lacking storage, this is the perfect solution. Why not finish off your bathroom vanity by adding a Shaving cabinet that combines the practicality of a mirror and hidden storage.

FEATURES / OPTIONS

- 5 x sizes – 600, 750, 900, 1200 & 1500mm
- Designed & manufactured by Forme
- Mirrored doors are 20mm longer than cabinet at the bottom for easy opening
- 4 x cabinet colours – White Gloss PU, Light Ash, Walnut and Dark Chocolate
- 2 x adjustable glass shelves
- Designed to compliment Mix & Match Vanity Collection perfectly



750 shaving cabinet in Walnut

HOW TO CHOOSE YOUR VANITY FROM OUR MIX & MATCH SELECTION OF FINISHES

1 Choose vanity size and format

MONT ALBERT FREESTANDING - depth 465mm

Mont Albert 600 FS
 Mont Albert 750 FS
 Mont Albert 900 FS
 Mont Albert 1200 FS

Left hand / right hand drawer options on all vanities with drawers

MONT ALBERT WALLHUNG - depth 465mm

Mont Albert 600 WH
 Mont Albert 750 WH
 Mont Albert 900 WH
 Mont Albert 1200 WH
 Mont Albert 1500 WH
 Centre drawers & double basin only

BLADE FREESTANDING - depth 465mm

Blade 600 FS
 Blade 750 FS
 Blade 900 FS
 Blade 1200 FS
 Blade 1500 FS
 4 drawers & double basin only

BLADE WALLHUNG - depth 465mm

Blade 600 WH
 Blade 750 WH
 Blade 900 WH
 Blade 1200 WH
 Blade 1500 WH
 4 drawers & double basin only

MADRID WALLHUNG - depth 465mm

MADRID 600 WH
 MADRID 750 WH
 MADRID 900 WH
 MADRID 1200 WH
 Drawer only

Please note P-Trap waste cut-outs to centre of drawer to allow for P-Trap plumbing.

2 Choose vanity colour



- White Gloss PU
 Light Ash
 Walnut
 Dark Chocolate

3A Choose Basin/Countertop

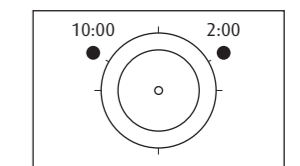


- Porcelain basin top (One tap hole only)
 *Applicable for 600, 750, 900 and 1200mm vanities only
- Polymarble basin top (One tap hole only)
 *Applicable for 600, 750, 900, 1200 and 1500mm vanities



- Ceramic under counter basin with engineered stone top
 Please select stone top colour (below)
 *Applicable for 750, 900 and 1200 Madrid and Blade vanities only
- Ceramic countertop basin with engineered stone top
 Please select stone top colour (below)
 and choose countertop basin (below)
 *Applicable for 600, 750, 900, 1200 and 1500mm vanities

Please note all swatches are representative of colour/finish only, see in store for accurate representation. All measurements are in millimetres (mm). Images, specifications and dimensions correct at time of publishing. It is advised that these details be confirmed prior to construction as no liability will be taken by Forme for any changes in specifications. Tapware not included.



Taphole position guide

3B Choose engineered stone top colour (if applicable)



- Blanc Stone
 Cement Stone
 Taupe Stone
 Concrete Stone



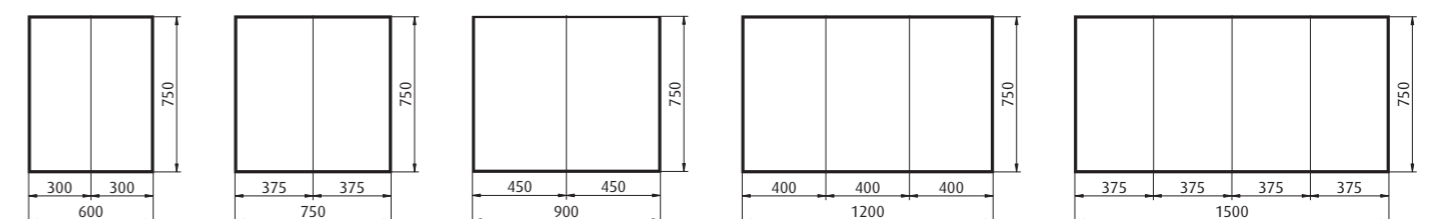
- Pluto*
 Luna*
 Organic Oval*
 Atom*
 Comet**
- Select taphole position
- 10:00 2:00
 10:00 2:00
 10:00 2:00
 10:00 2:00

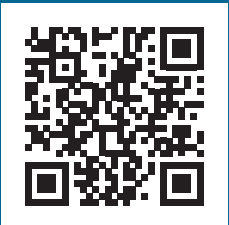
*Waste diameter cut-out ø80mm **Oval waste cut-out in stone
 If taphole is required for a Mont Albert with LHS drawers will be a 2:00 taphole option and if taphole is required for a Mont Albert RHS drawers will be a 10:00 taphole option

ADD A MATCHING SHAVING CABINET - OPTIONAL EXTRAS - depth 150mm



- 600 Shaving Cabinet
 750 Shaving Cabinet
 900 Shaving Cabinet
 1200 Shaving Cabinet
 1500 Shaving Cabinet





For more detail about the Forme Bathroom Collection please visit
www.formebathroomcollection.com.au