

# RAZOR VANITY ORDER FORM

**FORME**  
BATHROOM COLLECTION

Customer name \_\_\_\_\_

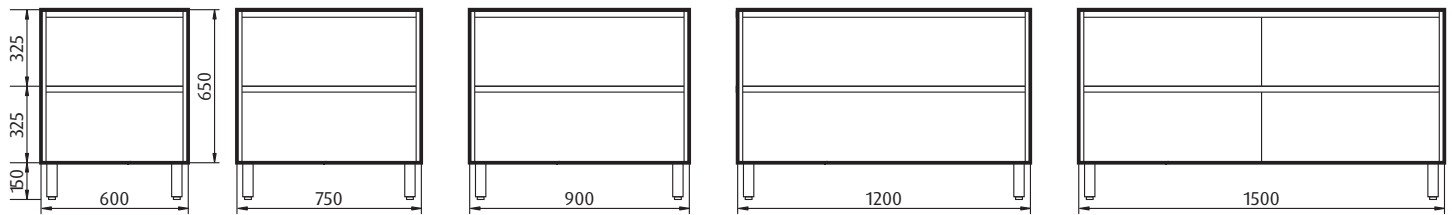
Contact number \_\_\_\_\_

Salesperson \_\_\_\_\_

Store \_\_\_\_\_

QUOTE# OR PO# \_\_\_\_\_

## 1 Choose vanity size and format - depth 465mm



☐ Razor 600 FS  
2 drawers

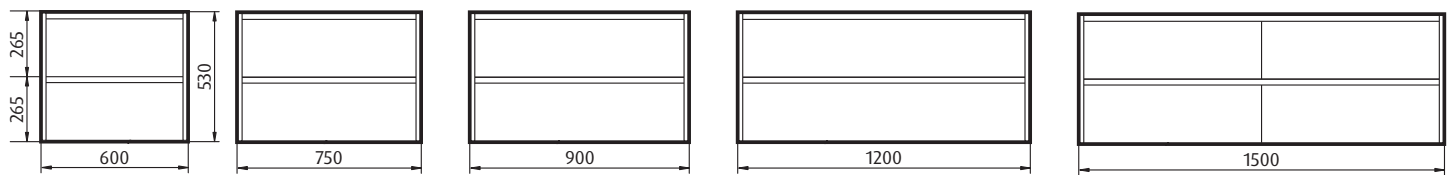
☐ Razor 750 FS  
2 drawers

☐ Razor 900 FS  
2 drawers

☐ Razor 1200 FS  
2 drawers

☐ Razor 1500 FS  
4 drawers

Please note - Freestanding cabinets have waste cut-outs to both drawers



☐ Razor 600 WH  
2 drawers

☐ Razor 750 WH  
2 drawers

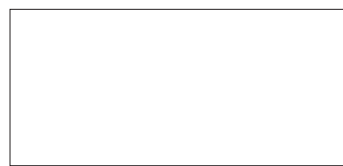
☐ Razor 900 WH  
2 drawers

☐ Razor 1200 WH  
2 drawers

☐ Razor 1500 WH  
4 drawers

Please note - Wallhung cabinets have waste cut-out to top drawer only

## 2 Choose vanity colour



☐ White Gloss PU



☐ Walnut

**Please note** all swatches are representative of colour/finish only, see in store for accurate representation. All measurements are in millimetres (mm). Images, specifications and dimensions correct at time of publishing. It is advised that these details be confirmed prior to construction as no liability will be taken by Forme for any changes in specifications. Tapware not included.

## 3 Choose Basin/Countertop



☐ Porcelain basin top (One tap hole only)  
\*Applicable for 600, 750, 900 and 1200mm vanities only



☐ Ceramic under counter basin with engineered stone top  
**Please select stone top colour (below)**  
\*Applicable for 750, 900 and 1200mm vanities only

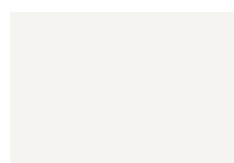


☐ Polymarble basin top (One tap hole only)  
\*Applicable for 600, 750, 900, 1200 and 1500mm vanities

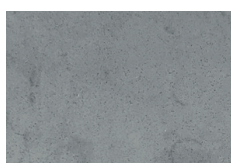


☐ Ceramic countertop basin with engineered stone top  
**Please select stone top colour (below) and choose countertop basin (to the right)**  
\*Applicable for 600, 750, 900, 1200 and 1500mm vanities

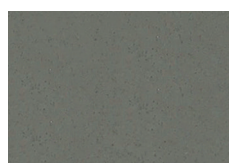
### Stone top colours



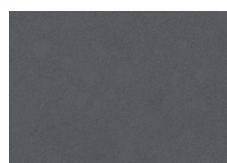
☐ Blanc Stone



☐ Cement Stone



☐ Taupe Stone



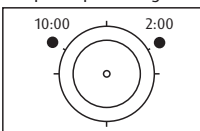
☐ Concrete Stone

Customer signature \_\_\_\_\_

Date \_\_\_\_\_

\*Waste diameter cut-out ø80mm \*\*Oval waste cut-out in stone \*\*\*No Tap Hole  
†Surcharge will apply with Riverstone and Pebble basins

### Tap hole position guide



☐ Luna\*

Select tap hole position

☐ 10:00 ☐ 2:00

☐ NTH\*\*\*



☐ Atlas\*

Select tap hole position

☐ 10:00 ☐ 2:00

☐ NTH\*\*\*



☐ Pluto\*

Select tap hole position

☐ 10:00 ☐ 2:00

☐ NTH\*\*\*



☐ Riverstone\*†  
Satin white

Select tap hole position

☐ 10:00 ☐ 2:00

☐ NTH\*\*\*



☐ Organic Oval\*

Select tap hole position

☐ 10:00 ☐ 2:00

☐ NTH\*\*\*



☐ Pebble\*†  
Satin black

Select tap hole position

☐ 10:00 ☐ 2:00

☐ NTH\*\*\*



☐ Comet\*\*



☐ Atom\*

Select tap hole position

☐ 10:00 ☐ 2:00

☐ NTH\*\*\*